

Quadro de Áreas SEGEP

1 Pavimento

ÁREA 1



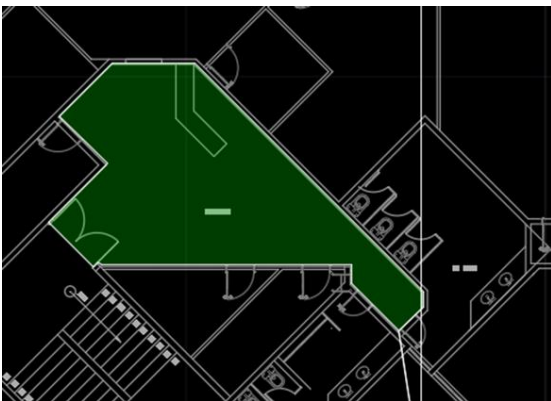
$$A = 99.1126 \text{ m}^2$$

ÁREA 2



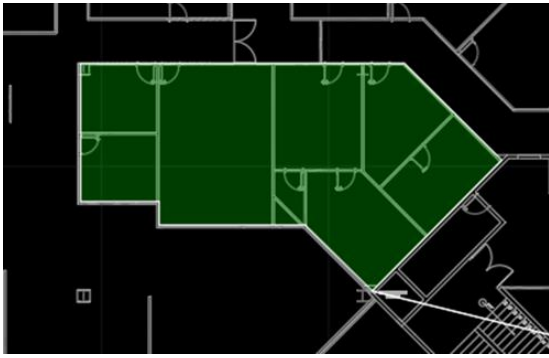
$$A = 72.0993 \text{ m}^2$$

ÁREA 3/ RECEPÇÃO



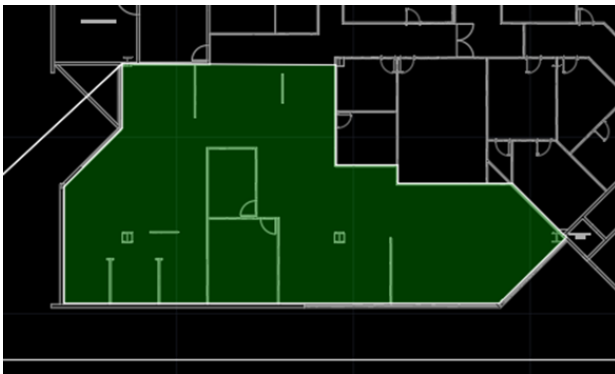
$$A = 36.1135 \text{ m}^2$$

ÁREA 4



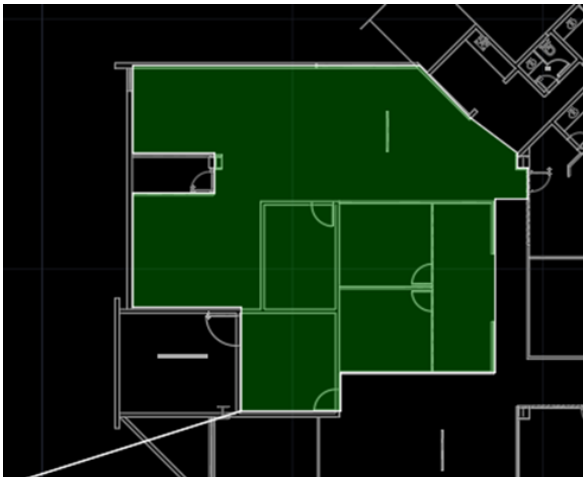
A = 122.7228 m²

ÁREA 5



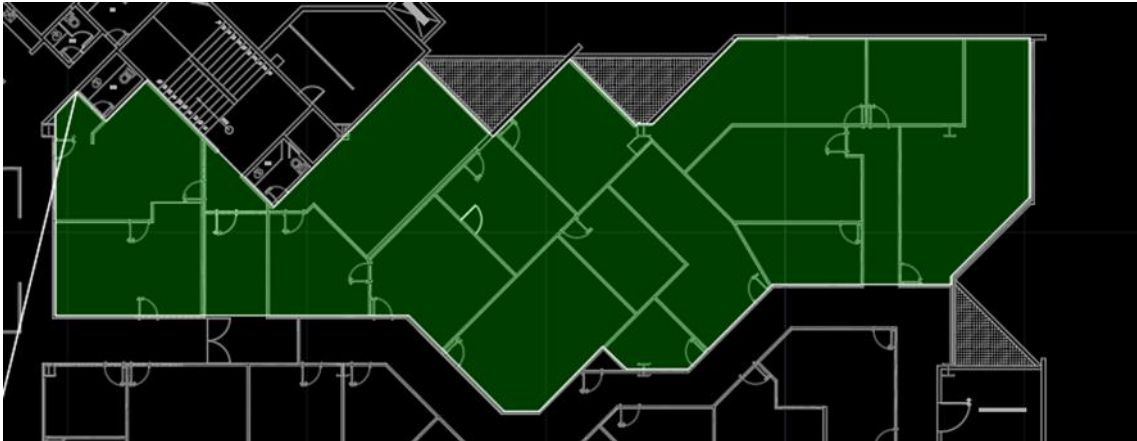
A = 270.1359 m²

ÁREA 6



A = 164.4678 m²

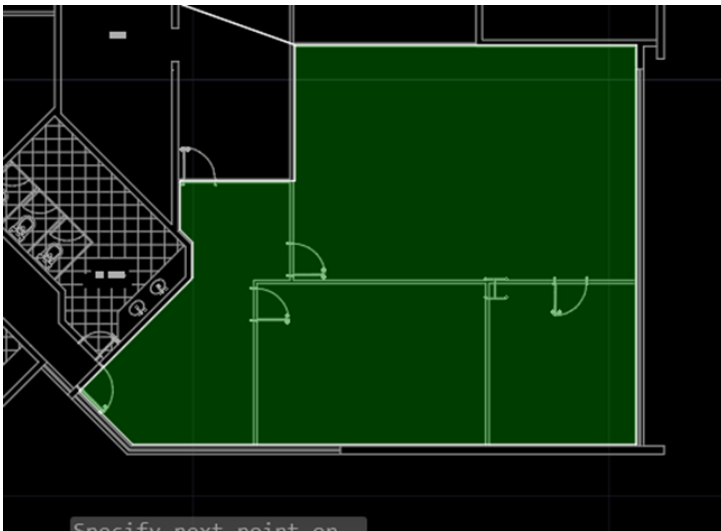
ÁREA 7



A = 391.1243 m²

2 Pavimento

ÁREA 8



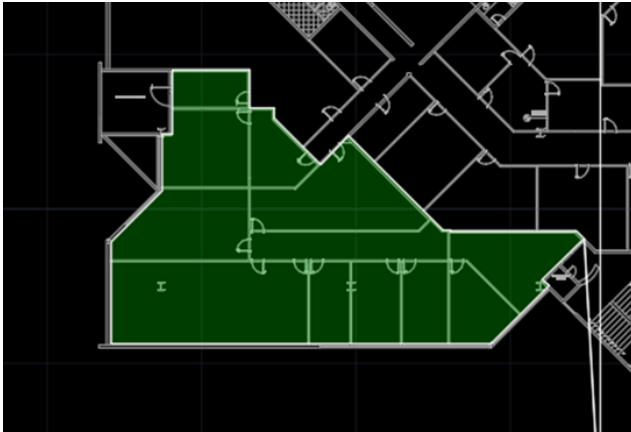
A = 101.3109 m²

ÁREA 9



A = 167.9329 m²

ÁREA 10



A = 320.5856 m²

ÁREA 11



A = 134.2076 m²

ÁREA 12



A = 389.5350 m²

1 Pav – 40,06 TR ---- 50 TR – (47,88 TR)

2 Pav – 38,41 TR ---- 80 TR – (77,3 TR)

TÉRREO

Área 13



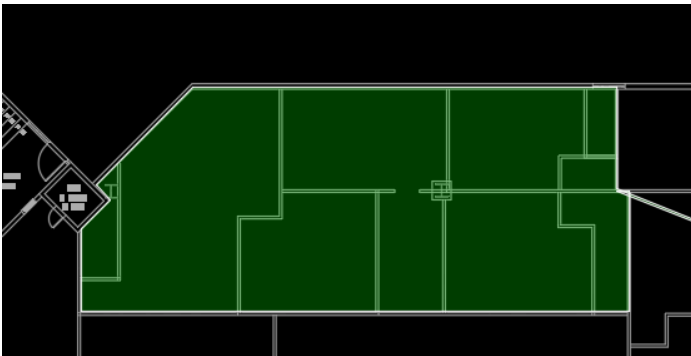
$$A = 100.35 \text{ m}^2$$

Área 14



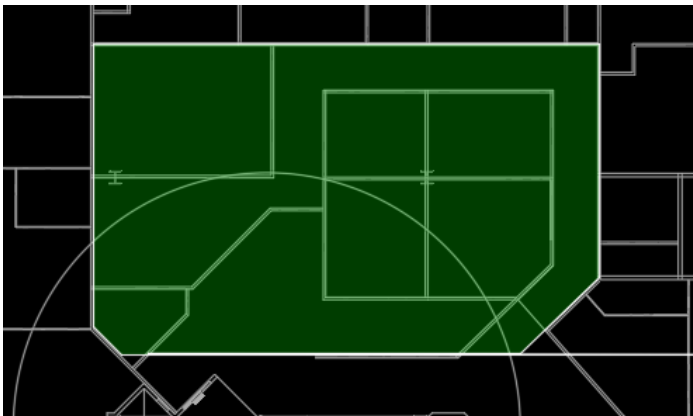
$$A = 107.66 \text{ m}^2$$

Área 15



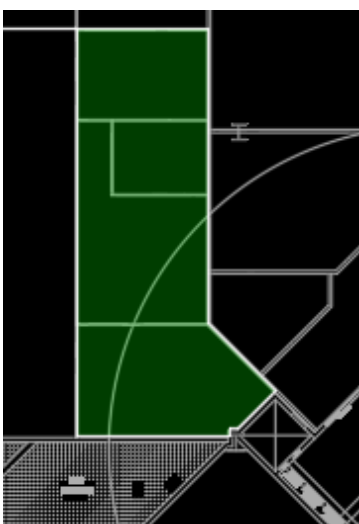
$$A = 158.96 \text{ m}^2$$

Área 16



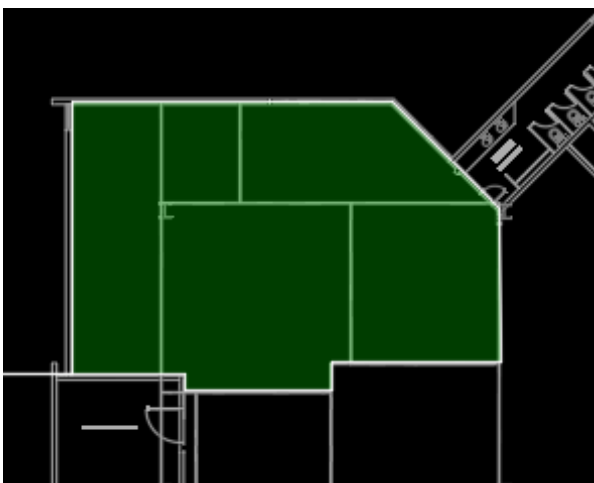
A = 250.47 m²

Área 17



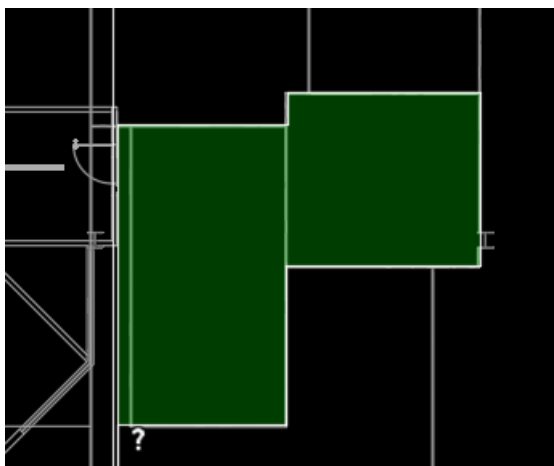
A = 58.09 m²

Área 18



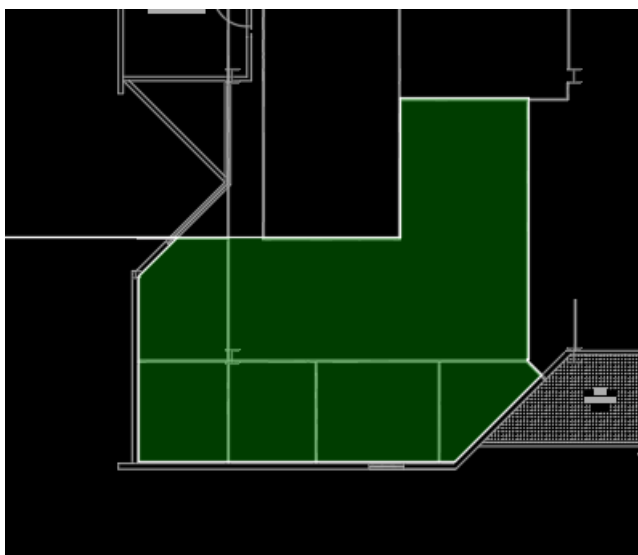
A = 139.88 m²

Área 19



$$A = 80.54 \text{ m}^2$$

Área 20



$$A = 127.49 \text{ m}^2$$

Térreo – 30,05 TR – 60 TR – (56,21 TR)