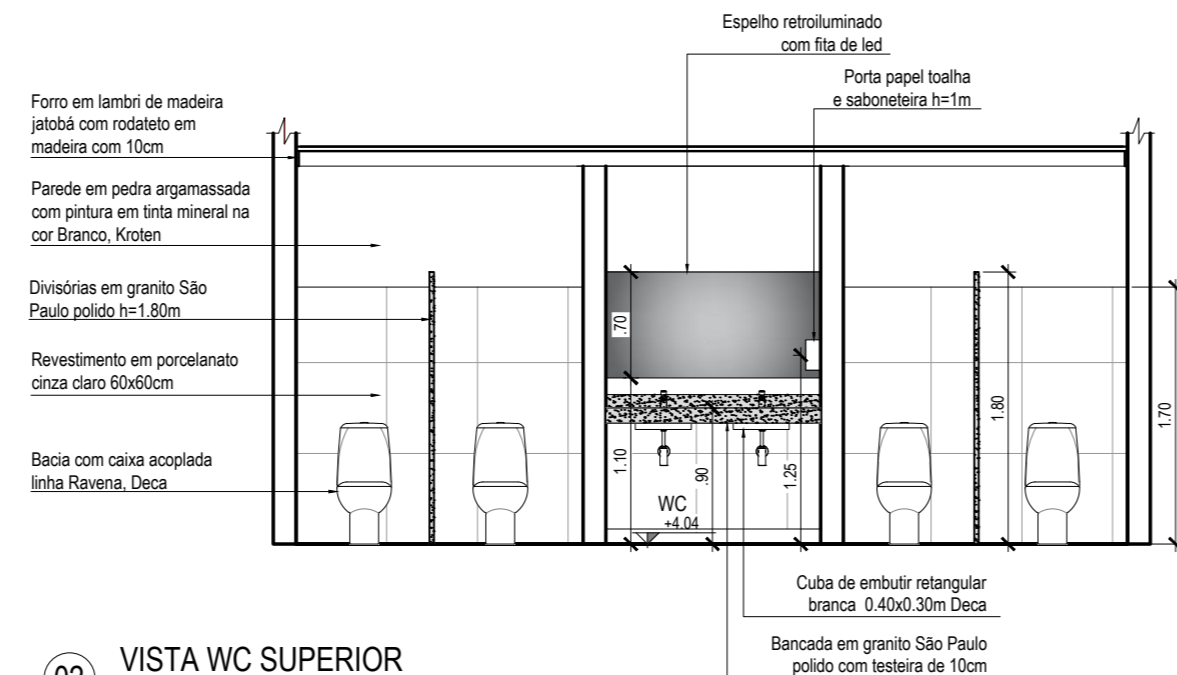
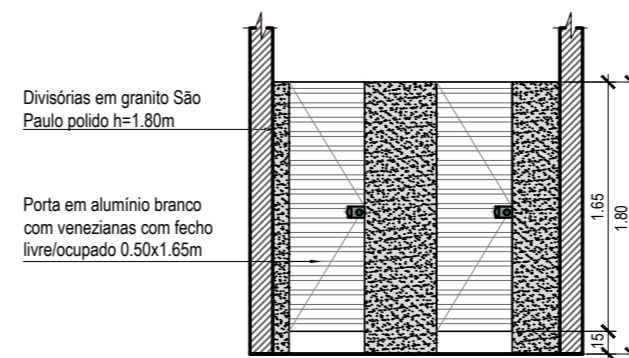


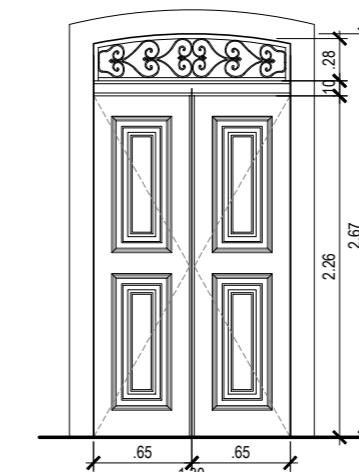
01 VISTA WC PCD  
ESCALA: 1/50



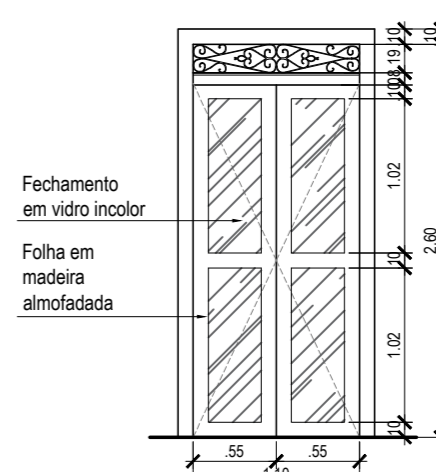
02 VISTA WC SUPERIOR  
ESCALA: 1/50



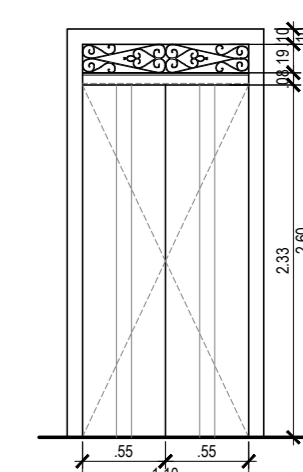
VISTA DIVISÓRIAS



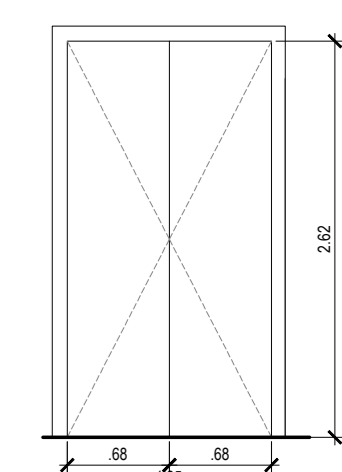
03 DETALHE - P1  
ESCALA: 1/50



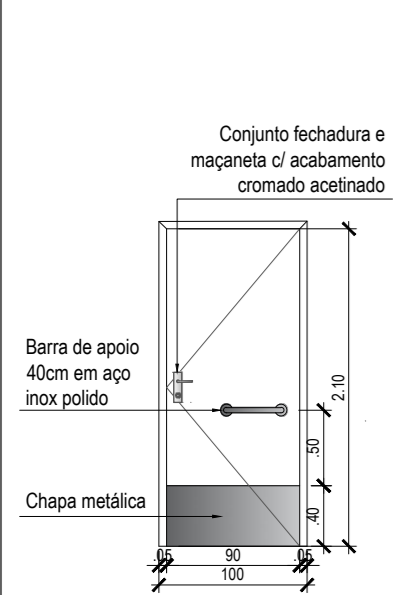
04 DETALHE - P2  
ESCALA: 1/50



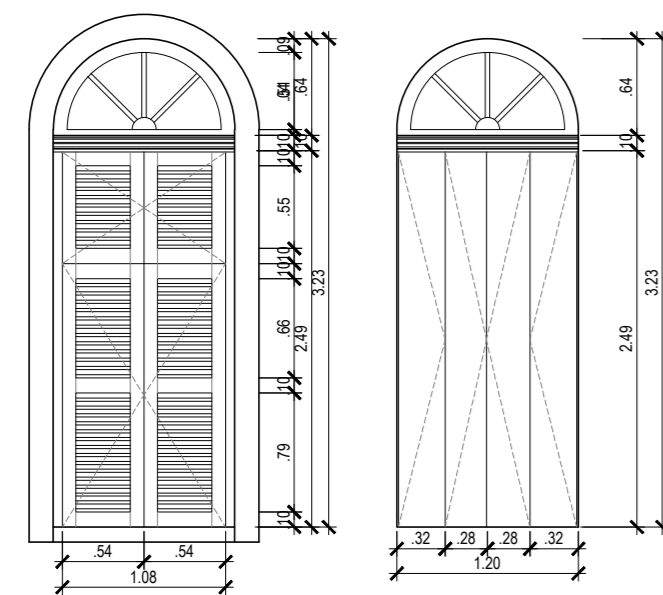
05 DETALHE - P3  
ESCALA: 1/50



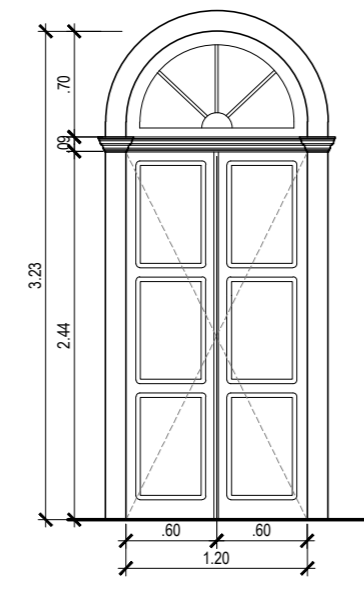
06 DETALHE - P4  
ESCALA: 1/50



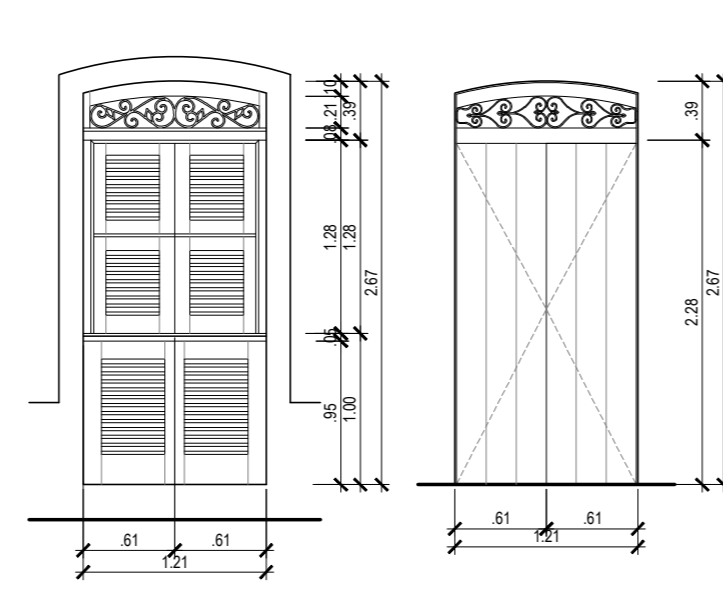
07 DET. - P5  
ESCALA: 1/50



08 DETALHE - P6  
ESCALA: 1/50



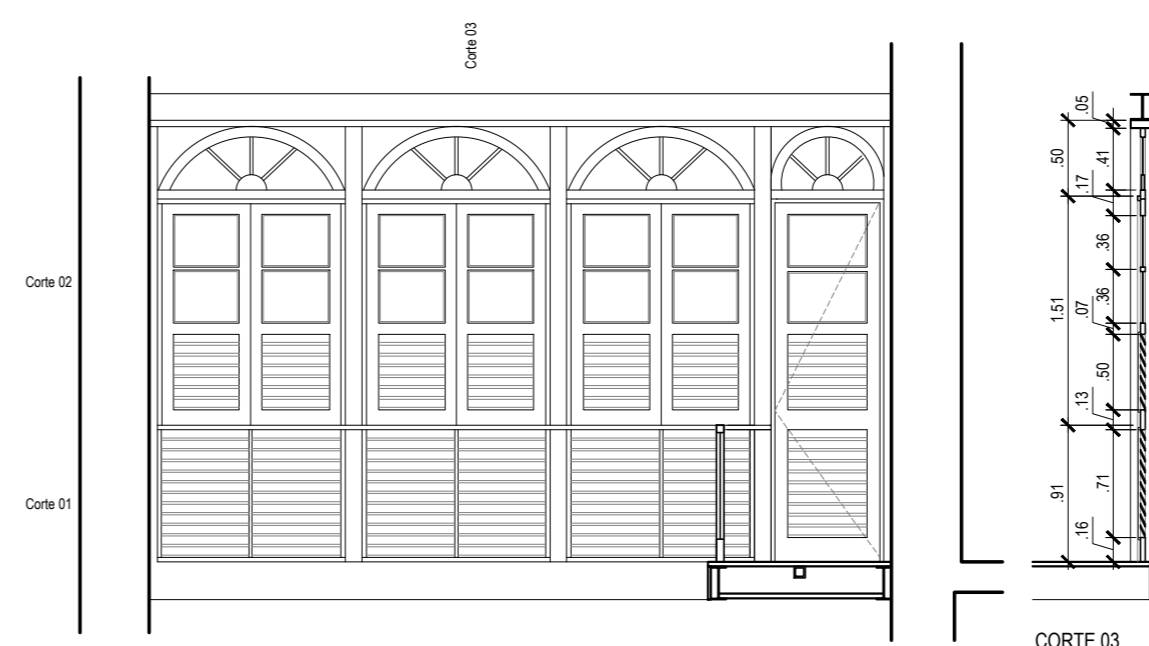
09 DET. - P7  
ESCALA: 1/50



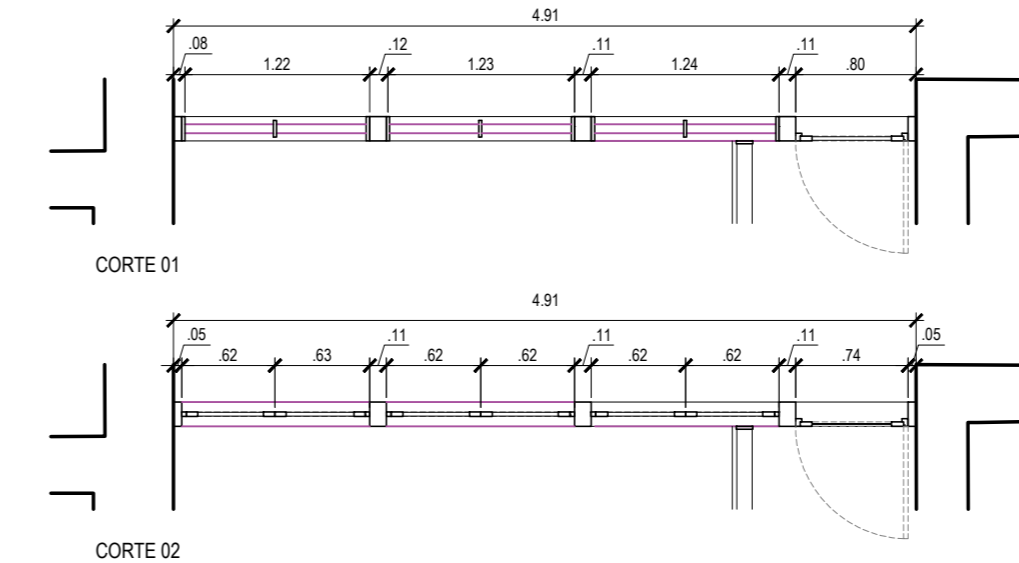
10 DETALHE - J1  
ESCALA: 1/50



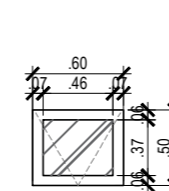
11 DET. - P9  
ESCALA: 1/50



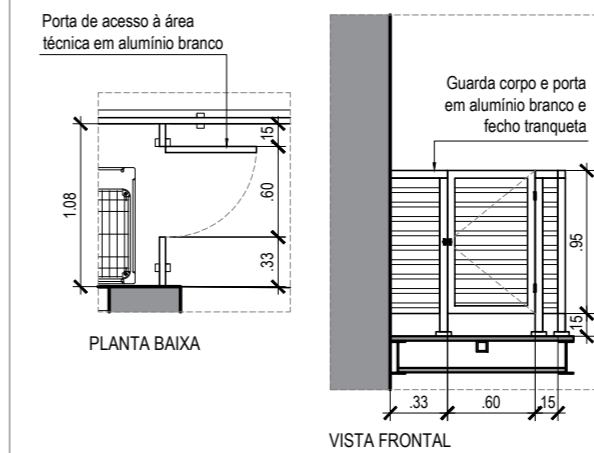
14 DETALHE - J03  
ESCALA: 1/50



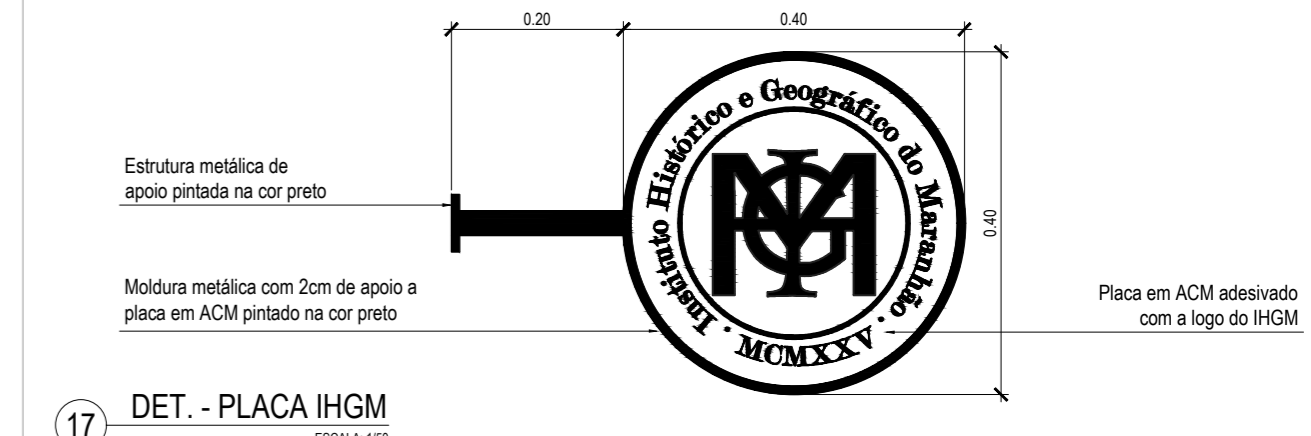
16 DET. - J02  
ESCALA: 1/50



17 DET. - J04  
ESCALA: 1/50



18 DETALHE ACESSO A. TÉCNICA  
ESCALA: 1/50



17 DET. - PLACA IHGM  
ESCALA: 1/50

CONTROLE DE REVISÕES			
DATA	REVISÃO	ANDRESSA VISTO	EMISSÃO INICIAL DESCRIÇÃO DA REVISÃO
19/01/2024	00	ANDRESSA VISTO	EMISSÃO INICIAL

GOVERNO DO **MARANHÃO** SECRETARIA DE ESTADO DAS CIDADES E DESENVOLVIMENTO URBANO

**SECID**

NOME DO PROJETO: **SEDE IHGM**

LOCAL: PRAÇA ANTONIO LOBO, 33, CENTRO SÃO LUÍS - MA ZONA: ZPH

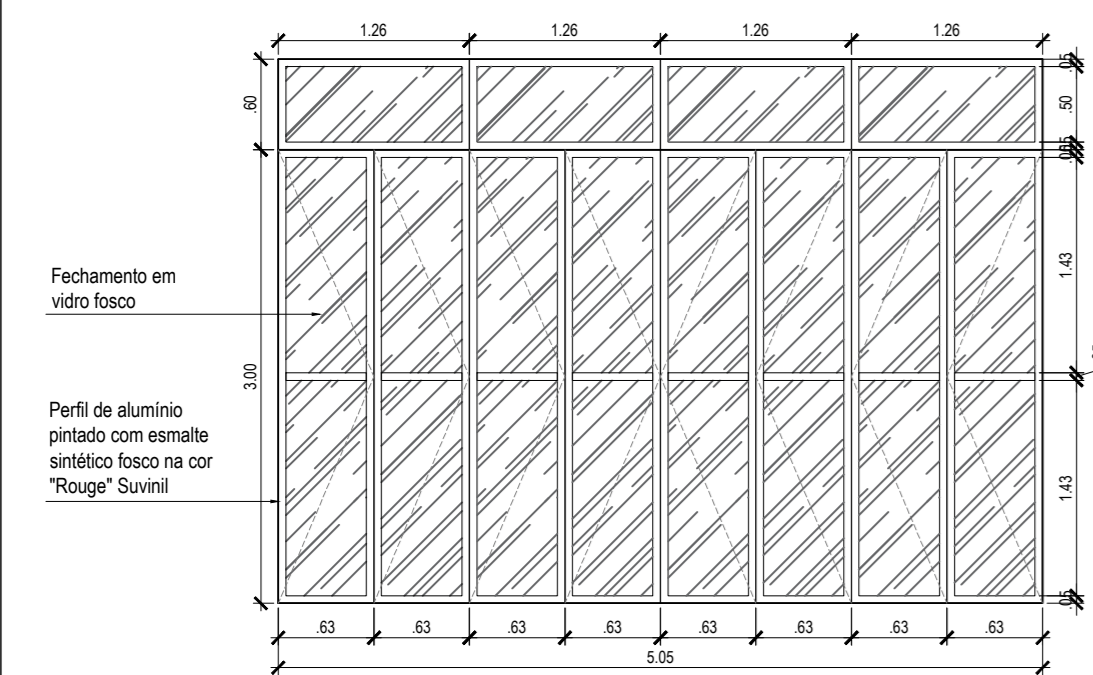
TÍTULO: DETALHES DISCIPLINA: ARQUITETURA

GESTOR (A): ROBSON DA PAZ PEREIRA SECRETÁRIO ADJUNTO DE ASSUNTOS METROPOLITANOS FASE DO PROJETO: EXECUTIVO

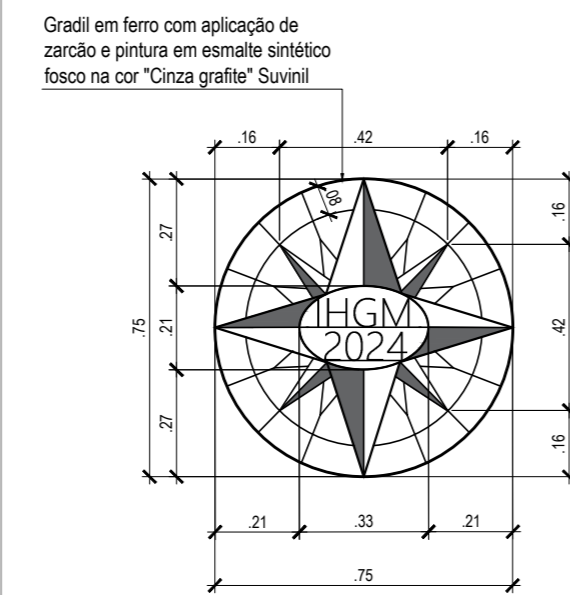
RESPONSÁVEL TÉCNICO: ANDRESSA SILVA FARIAS ARQUITETA E URBANISTA / CAU Nº 4257710-0 FOLHA: 07/10

EQUIPE TÉCNICA: GUILHERME GONÇALVES CÂMILA GOMES ARRAIZ AURÉLIO FERNANDES TÍTULO: ENGENHEIRO CIVIL ENGENHEIRA CIVIL ARQUITETO E URBANISTA REGISTRO: CREA-MA/RN nº11173800-9 CREA-MA/RN nº111852830-1 CAU nºA105322-1

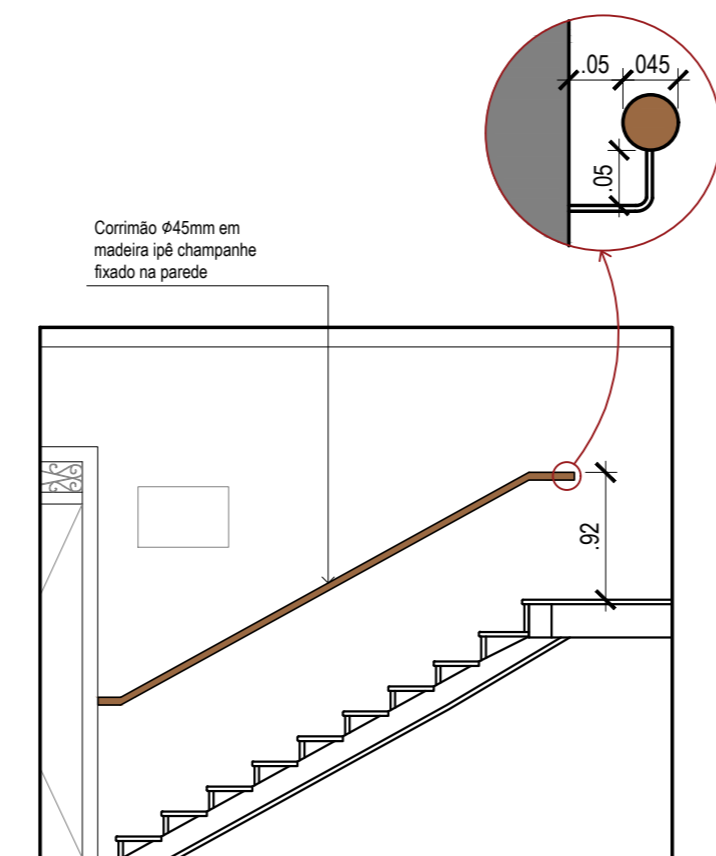
ESCALA: INDICADA DATA - EMISSÃO INICIAL: 19/01/2024 REVISÃO: 00 DATA - REVISÃO:



12 DETALHE - P10  
ESCALA: 1/50



13 DETALHE - G01  
ESCALA: 1/50



15 DETALHE - CORRIMÃO  
ESCALA: 1/50